



B15S-7 / B18S-7

B20S-7 / B25S-7 / B30S-7 / B32S-7

## 7 SERIES FORKLIFTS

Electric 1.5 to 3.2 ton capacity

4 wheel



# Leading the way

The new 7 Series of 4 wheel electric counterbalance forklift trucks, continue to follow the core Doosan tradition of delivering simple, powerful performance, whilst most of all, delivering the best possible value for our customers.

The specially designed ergonomic operator compartment keeps the operator in complete control at all times, improving productivity and reducing stress and fatigue. The new model offers improved visibility and the latest design in ergonomic hydraulic controls. Thanks to an improved durable design, Doosan's new 7 Series electric trucks exceed the highest demands for safe operation.

The latest in AC control systems provide an unbeatable combination of power, performance and reliability. Each parameter is fully adjustable to perfectly match every your individual requirement, providing maximum control and accuracy for every function

“ Higher lifting and travel speed helps me to complete my job efficiently ”

### PRODUCTIVITY

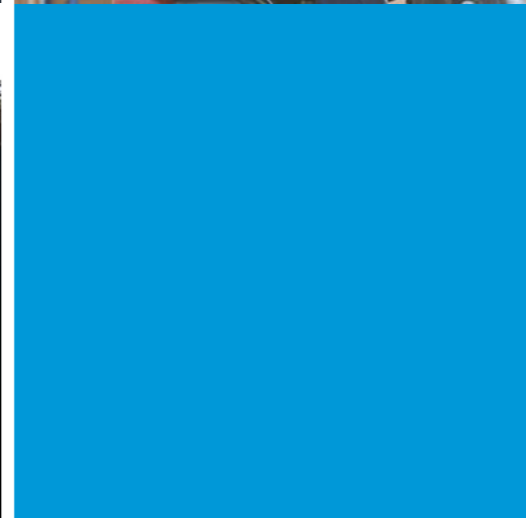
- Excellent visibility
- Smooth driving sensitivity
- Direction switch on main control valve



“ The robustness of the Doosan truck gets the toughest of jobs done ”

### DURABILITY

- Reliable AC control
- Durable transaxle
- Durable Oil cooled disk brake



“ The Doosan service support network has never let me down ”

### SERVICEABILITY

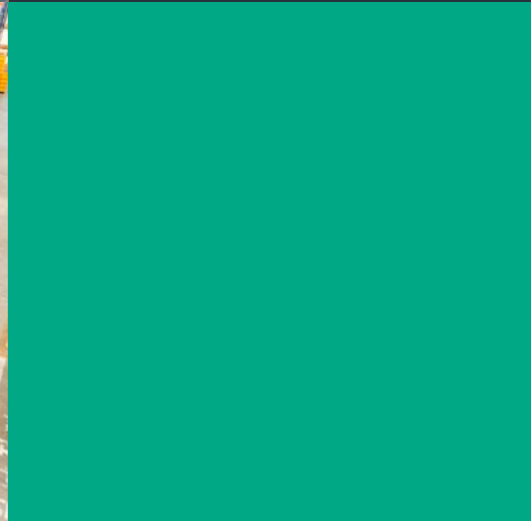
- Doosan service network coverage
- Quick service response
- Easy to fix design



“ With the reassuring features of Doosan truck, operation is safe and comfortable ”

### SAFETY AND ERGONOMICS

- Anti roll back
- Operator sensing system(OSS)
- Automatic speed control
- ISO3691 Hydraulic locking



## Features overview

Power, excellent performance, driving comfort, durability, and outstanding Productivity will certainly satisfy you

### DURABILITY

- Reliable AC controller
- Rugged and durable transaxle
- ODB - Oil cooled disc brakes
- IP 54 rated drive & pump motors (Option)
- Water and dust proof for outdoor use

### PRODUCTIVITY

- Excellent visibility
- Smooth and responsive acceleration
- Direction switch on hydraulic control lever

### SERVICEABILITY

- Worldwide service network
- Doosan genuine parts
- Easy to access controller room and electric parts
- Examine forklift program with 'Easy view'



### ENHANCED SAFETY

- Anti roll back
- Automatic speed control
- ISO3691 Hydraulic locking
- OSS(Operator sensing system)
- Rear grab handle with horn
- Emergency switch
- LED light
- Large panoramic mirror

### ADDITIONAL FEATURES

- Easy and Instinctive display
- Convenience tray
- Compact steering wheel
- Comfort and adjustable seat
- Adjustable column
- Turtle mode

## Durability

The 7 Series provide smooth and durable operation in various work applications.

With the reliable AC controller and the optimized design, Doosan's new machine is able to deliver efficient operation.



◀ Doosan 7 series offers the torque and speed necessary to run up ramps and meet the challenges of the toughest applications.



### Reliable AC controller

Curtis AC controllers provide an unbeatable combination of power, performance and functionality. IP 65 rated controller is very reliable and well proven in tough applications.



### IP54 dust and water protection drive and pump motor (Option)

Maintenance Free Electric Motors by eliminating motor brushes and commutators. The new sealed motors(option) are rated to IP54.



### Rugged and durable transaxle

A full floating drive axle combines with the rugged AC drive motor to form a highly efficient transaxle. The transaxle effectively transfers the power and torque of the drive motor to the final drive for both smooth and quiet operation.



### ODB (Oil cooled Disk Brake)

There are 3 to 5 double sliding discs per wheel. Discs are submerged in oil, keeping them cool and limiting wear. The Doosan ODB system is completely enclosed and sealed from outside contaminants protecting the inner workings of the brake system from dirt, water, shrink wrap and broken pallets.

# Productivity

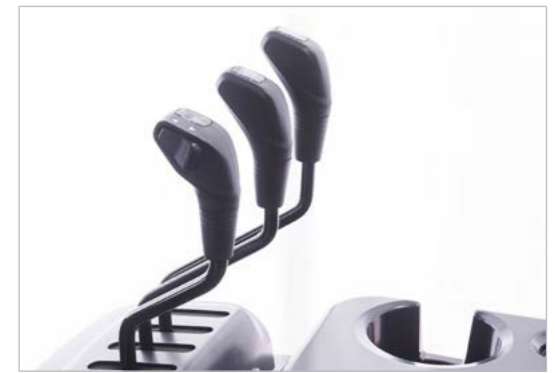
## Excellent Visibility and Driving Acceleration

### Excellent visibility

The precise designed overhead guard profile with angled roof bars provides a clear view upwards whilst ensuring ultimate strength for safety.



Neatly arranged hydraulic hoses and chains provide clear front visibility through the wide view mast.



### Hydraulic lever with directional switch (Option)

The direction switch is located on the hydraulic lever, meaning quick change of forward to backward.



### Productive acceleration & braking

Reduce initial acceleration for safe & comfortable movement.  
Increase acceleration in mid & high-speed for more productive operation.  
Decrease braking pedal effort.

# Enhanced Safety



### LED lights (Option)

Brighter and last longer than traditional sealed beams or halogen lights.



### Emergency switch

The operator can push the emergency switch with one hand on the steering wheel quickly.



### Large panoramic mirror (Option)

Provides the operator a clear view of the rear working area, improving working safely & efficiently.



### Anti roll back

The controller prevents the forklift from rolling back for 5 seconds when the truck is stopped on a slope.



### Automatic speed control

It automatically reduces the travel speed to the optimal speed when cornering, reducing the risk of accidents or damage.



### Rear grab handle with horn (Option)

Enhances safety, comfort and convenience when traveling in reverse.



### Mast lowering inter-lock & Tilt lock (ISO3691) The hydraulic locking

The hydraulic locking system prevents natural lowering and tilting. It safeguards the work array, the truck and the load even if the operator leaves the truck unattended.



### OSS (Operator Sensing System)

Whenever the operator leaves the seat, the truck travel and mast lifting functions will stop. This systems avoids any unintended forklift movements when the operator is not seated.

# Better Serviceability

## Worldwide service network

- Head quarter
- Overseas offices and service centers



Doosan provides high-quality support, relying on its extensive dealer network. No matter where you are located, highly-skilled professionals are always ready to help you, guaranteeing maximum uptime.



### Doosan genuine parts

The parts warehouse, supplies high quality Doosan parts to the dealer network.



Wide open hood cover with locking type gas spring

Tool-less side panel with air ventilation



Easy to access electric parts



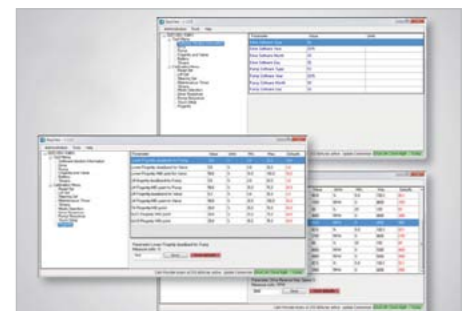
Easy to access controller room

A controller room with easy access and a removable cooling fan module can be checked and serviced more easily.



Brake oil indicator

Check brake oil level and display warning indicator on instrument panel. The reservoir can be accessed easily.



Easy view

To examine the forklift and set the program with notebook only (without a special tool)



# Additional Features



### Small steering wheel

The steering wheel has a compact design that reduces operator fatigue.



### Adjustable column

The operator can adjust the position of the column for convenience and comfort.



### Anti slip step & Entry bar

Anti slip step and entry bar helps easy to get in/off truck.



### Easy and instinctive instrument panel

Operators can control the truck's performance settings during operation, simply by navigating the instrument panel.



### Premium adjustable seat (Grammer seat, Option)

The full suspension comfort seat is fully adjustable to accommodate every individual preference. Additional heating system is also available for better operator convenience.



### Convenience tray

The convenience tray was conceived by adopting combinations of new and old favorites to give the best operator experience. Some of the features include: a large cup holder, a USB port, 12V power outlet, and a clipboard holder.



### Comfort operator leg room

Thick and large rubber floor mat & rounded hood are offers comfort operator's room.



### Turtle mode

Operators can select pre defined travel speed setting, without impacting the lifting speed. This mode ensures safe maneuverability in delicate operating situations.

**SAVE SPEED**





**Global Leader**  
**DOOSAN FORKLIFT**



# The best proposal for every application

Doosan can provide you with the best proposal for your operation, from internal combustion forklifts to electric warehouse equipments and much more. Please contact Doosan to discuss your needs.

- A** Chemical factory
- B** Steel factory
- C** Foundry
- D** Construction site
- E** Paper factory
- F** Beverage warehouse
- G** Lumber factory
- H** Building material factory
- I** Food Processing factory
- J** Whole sale
- K** Cold storage warehouse
- L** Recycling site
- M** Automotive factory
- N** Warehouse
- O** Port
- P** Airport
- Q** Farm
- R** Fishery warehouse



## Main Specifications

MAJOR SPECIFICATION		B15S-7	B18S-7	B20S-7	B25S-7	B30S-7	B32S-7
Load capacity/rated load	kg(lb)	1500(3000)	1750(3500)	2000(4000)	2500(5000)	3000(6000)	3200(6400)
Load centre distance	mm(in)	500(24)	500(24)	500(24)	500(24)	500(24)	500(24)
Load distance, centre of drive axle to fork	mm(in)	394(15.5)	394(15.5)	410(16.1)	410(16.1)	411(16.2)	411(16.2)
Wheelbase	mm(in)	1250(49.2)	1250(49.2)	1400(55.1)	1400(55.1)	1550(61.0)	1550(61.0)
Aisle width for pallets 1000 x 1200 crossways	mm(in)	3421(134.7)	3451(135.9)	3652(143.8)	3672(144.6)	3801(149.6)	3831(150.8)
Aisle width for pallets 800 x 1200 lengthways	mm(in)	3221(126.8)	3251(128.0)	3452(135.9)	3472(136.7)	3601(141.8)	3631(143.0)
Turning radius	mm(in)	1825(71.9)	1855(73.0)	2040(80.3)	2060(81.1)	2190(86.2)	2220(87.4)
Travel speed, loaded / unloaded	km/h(mph)	17 / 17 (10.6 / 10.6)	17 / 17 (10.6 / 10.6)	18 / 18 (11.2 / 11.2)	18 / 18 (11.2 / 11.2)	18 / 18 (11.2 / 11.2)	18 / 18 (11.2 / 11.2)
Lift speed, loaded / unloaded	m/sec(fpm)	0.40 / 0.60 (78.7 / 118.1)	0.40 / 0.60 (78.7 / 118.1)	0.44 / 0.60 (86.6 / 118.1)	0.39 / 0.60 (76.8 / 118.1)	0.34 / 0.60 (66.9 / 118.1)	0.32 / 0.60 (63.0 / 118.1)
Lowering speed, loaded / unloaded	m/sec(fpm)	0.50 / 0.45 (98.4 / 88.6)	0.50 / 0.45 (98.4 / 88.6)	0.50 / 0.46 (98.4 / 90.6)	0.50 / 0.46 (98.4 / 90.6)	0.50 / 0.46 (98.4 / 90.6)	0.50 / 0.46 (98.4 / 90.6)
Maximum drawbar pull, loaded / unloaded, 5 minute rating	N(lb)	10497(2360)/ -	10693(2404) / -	15892 / 11968 (3573 / 2690)	15598 / 11674 (3506 / 2624)	14224 / 10791 (3198 / 2426)	14126 / 10791 (3176 / 2426)
Maximum gradeability, loaded / unloaded, 5 minute rating	%	24 / -	22 / -	28 / 32	24 / 28	19 / 23	18 / 22
Battery voltage/nominal capacity K5	V/Ah	48 / 450	48 / 500	48 / 715	48 / 800	48 / 800	48 / 800

## Standard Features and Optional Extras

### SAFETY & STABILITY

OSS(Operatoe sensing system)	Standard features
Anti roll back	Standard features
Low battery warning alarm	Standard features
ISO 3691 Mast lowering inter-lock & tilt lock	Standard features
Emergency stop switch	Standard features
Automatic speed control	Standard features
Rear grab bar with horn switch	Optional extras
LED Lights	Optional extras

### OPERATOR COMFORT(ERGONOMICS)

Entry grip entry bar & large entry step with anti-slip pattern	Standard features
Large & angled floor plate (leg room) with rubber mat	Standard features
Rounded design battery hood cover	Standard features
Easy to read instrument panel	Standard features
Adjustable tilt steering column & easy grip (φ280 size) steering wheel	Standard features
Large cup holder, usb port & 12v electric jack, clip board	Standard features
Premium seats : Grammer seat	Optional extras
Panoramic mirror	Optional extras
Modular cabins A,B,C / Full cabin	Optional extras

### PRODUCTIVITY

Excellent visible mast (B20/25S)	Standard features
Rounded design counterweight	Standard features
Hydraulic cushioned valve in secondary cylinder (FFL & FFT)	Standard features
Smooth and responsive acceleration	Standard features
Application packages : Cold	Optional extras
Auto tilt leveling	Optional extras
Direction switch on main control valve	Optional extras

### DURABILITY & SERVICEABILITY

Full AC system chassis	Standard features
IP65 Rated curtis controller	Standard features
Robust frame structure & strong structure overhead guard	Standard features
Easy to access controller	Standard features
Wide open battery hood cover	Standard features
Tool-less side cover with air ventilation	Standard features
Oil-cooled disc brakes (ODB)	Standard features
IP 54 rated drive & pump motors	Optional extras

- Standard features
- Optional extras

\* Remark : This list is based on factory data. Standard or optional can vary for specific countries.

# About Doosan

Values that drive our future growth

## Trust in people is the foundation on which Doosan has built its century of success

Doosan has always put 'People' first for the past 100 years, based on our management philosophies.- 'Business is not meant to make profits, but to help people grow.' (Late Too Pyung Park, First Chairman), and continues to spur corporate development with global competitiveness originated from human resources.

## Doosan the oldest, but fastest growing company

Doosan has recorded the longest business history since its inauguration in 1896, but has grown at its most rapid pace for the past 10 years.

## Doosan-the global Infrastructure Support Business (ISB) company

Doosan has created in excess of 90% of its sales within the ISB sector through vigorous reorganisation of its business portfolio since 1998. In the past, 70% of our business was concentrated on consumer goods, but we have successfully transformed our business DNA to the infrastructure support business that constructs and reinforces social infrastructure.

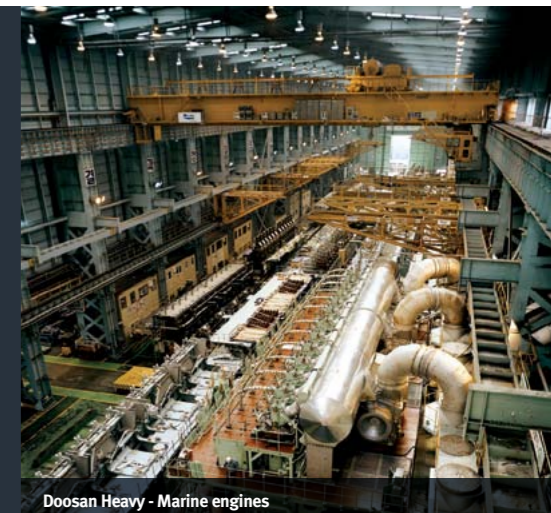
## Doosan, surging as a global company

Doosan has become the global ISB leader based on its world class products and services. In addition, as a true global company, Doosan's overseas employees encompass 50% of its human resources, and overseas sales take more than over 60% of the total sales.



Doosan Infracore - Construction equipment

**Committed To Our Customers**  
We are committed to our customers, providing superior products and excellent services to go with them into the future.



Doosan Heavy - Marine engines

**Committed To Innovation**  
We remain committed to the advancement of new technologies and development of talented individuals, positioning us to respond effectively to the rapid changes taking place in the 21<sup>st</sup> century. Our mission is to strengthen our global position and become the industry leader well into the future.



Doosan Bobcat - Skid loader (with Doosan engine)



**Doosan Way**  
The Doosan Way is our unique way of doing business; the philosophy and culture that will guide us to become the "Proud Global Doosan."






**Our Promise**  
Doosan will be the partner you can count on, always putting our commitment to you first.



Doosan Heavy - Seawater desalination plants



-  Production Subsidiary
-  Sales Subsidiary
-  Parts Depot Center



Doosan Corporation Industrial Vehicle  
Web site: [www.doosan-iv.com](http://www.doosan-iv.com)

2018 April

Authorized Dealer